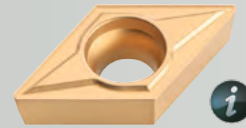


COMPACT BEVELING TOOL ACCESSORIES

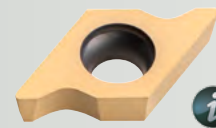
for KFM 18 LTX 3 RF, KFM 9-3 RF



(DCMT II T 304)
P/N: 623560000 - 45°

Indexable Carbide Inserts

- Constructed of long life tungsten carbide
- Chamfer and radius versions
- Pack of 10



P/N: R2 (5/64"): 623561000

P/N: R3 (1/8"): 623562000



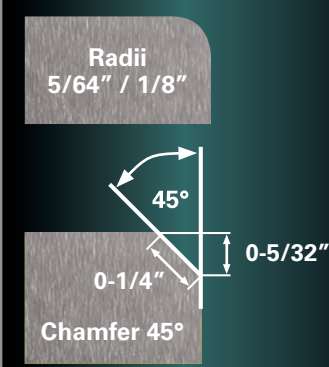
P/N: 623566000

Replacement Insert Screws

- Pack of 10

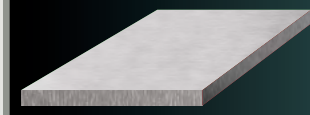
VARIOUS APPLICATION AREAS

Possible cutting shapes

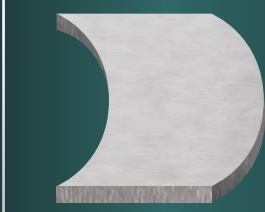


Possible edges/contours for compact beveling tools

Chamfer or radius straight edges
Using cutting guide
(min. thickness: 23 gauge)



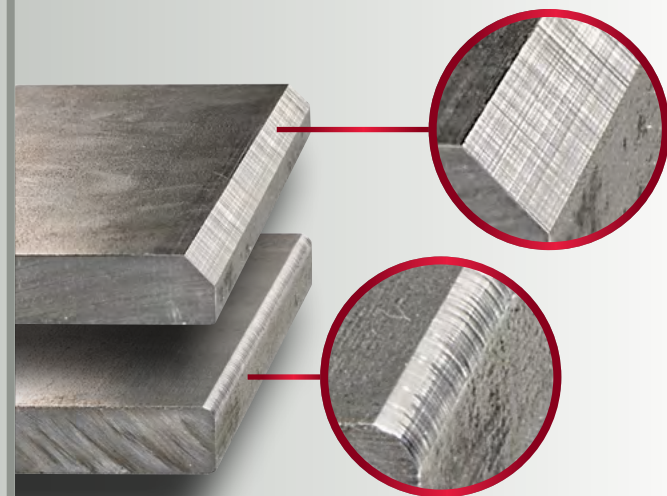
Inside/outside curves
Chamfer or radius with guide bearing
(min. thickness: 23 gauge)



Inside holes/curves
Chamfer or radius internal holes with guide bearing
(min. diameter 1/2")



HIGH SURFACE QUALITY = PRECISE WORK RESULTS



- Uniform surfaces for highest weld quality
- Edge breaking/deburring of sheet metal
- Perfect radii of edges for optimal paint/coating preparation

Optimal paint/powder coating preparation

Processing of edges:

- Perfectly rounded edges
- Uniform coating thickness
- best protection from corrosion



Without edge processing:

- Increased risk of corrosion at corners



COMPACT BEVELING TOOLS



Used for 45° chamfers to 5/32" depth and radii of 5/64" and 1/8"



Model	KFM 9-3 RF	KFM 18 LTX 3 RF
Order No.	601751750	601754750 (5.5 AH LiHD Kit) 601754840 (Bare)
No-Load RPM	4,500-11,500	7,000
Rated Input Power/battery pack	900W / 8.0A	18 V LiHD, 5.5 Ah
Max. chamfer height at 45°	5/32"	5/32"
Possible radii	5/64" and 1/8"	5/64" and 1/8"
Depth setting index	.004 increments	.004 increments
Type of edges	Chamfer and radius	Chamfer and radius
Cable length	13'	n/a
Tool weight (without power cable)	5.5 lbs.	6.8 lbs. (including battery)
Includes:	(Torx 15 driver, 1.5mm hex key, 2 ea. 45° bevel and 5/64" / 1/8" radius carbide inserts)	

BEVELING TOOLS FOR WELD SEAM PREPARATION



KFM 15-10 F



KFMPB 15-10 F



KFM 16-15 F

Used for bevel heights up to 3/8" at 45° for weld preparation

Used for bevel heights up to 5/8" at 45° for weld preparation

Models	KFM 15-10 F	KFMPB 15-10 F	KFM 16-15 F
Order No.	601752620	601755620	601753620
No-Load RPM	7,800 - 12,200	12,500	12,000
Rated input power	1,500W / 13A	1,500W / 13A	1,550W / 14A
Maximum bevel height at 45°	3/8"	3/8"	5/8"
Depth setting index	.004 increments	.004 increments	.004 increments
Bevel angle setting	0 – 90 degrees	0 – 90 degrees	0 – 90 degrees
Cable length	13'	13'	13'
Tool weight (without power cable)	10.8 lbs./11.2 lbs.	10.8 lbs./11.2 lbs.	15.2 lbs.
Includes:	(Torx 15 driver, 4mm hex key, 10mm wrench, 3 SQ4 carbide inserts (623564000), roller guide for pipe)		

JOIN THE CONVERSATION!
metabo.com/club



Metabo Corporation
Phone: 610-436-5900 or 800-638-2264
Fax: 800-638-2261
info@metabousa.com
www.metabo.com



Metabo Canada Inc.
Phone: 905-624-5897 or 877-638-2261
Fax: 877-638-2269
info@metabo.ca
www.metabo.ca

US2013 8/18

metabo
PROFESSIONAL POWER TOOL SOLUTIONS



when it really counts

WELD PREP, EDGE PREP, BEVEL, CHAMFER AND RADIUS



GET PERFECT RESULTS...
EASIER, 5X FASTER, SAFER!

metabo
PROFESSIONAL POWER TOOL SOLUTIONS

COMPACT BEVELING TOOLS

LARGE BEVELING TOOLS FOR WELD PREPARATION

LARGE BEVELING TOOL ACCESSORIES

(KFM 15-10 F, KFMPB 15-10 F, KFM 16-15 F)

KFM 18 LTX 3 RF
(5/32" capacity at 45°)
(5/64", 1/8" radius)

WORLD'S FIRST
First cordless beveling tool for 45° chamfers up to 5/32" and radii 5/64" / 1/8"

Rotatable Battery Pack
- For working in confined spaces

Detachable Dust Filter
- Protects motor components from damage

Additional Cutting Guide
- For increased precision of straight edges and perfect beveled corners

Patented One-Touch Controller
- Tool free depth adjustment
- Unmatched precision
- Locked in depth settings

Softstart
Restart Protection
Ultra Technology
3 Years



Corded version

KFM 9-3 RF
(5/32" capacity at 45°)
(5/64", 1/8" radius)

PLAY ▶

Vario Constantatic
Longlife Motor
Softstart
Restart Protection

Patented One-Touch Controller
- Tool free depth adjustment
- Unmatched precision
- Locked in depth settings



Patented One-Touch Controller
- Tool free depth adjustment
- Unmatched precision
- Locked in depth settings

13A / 1500 Watt LongLife Motor
- With integrated dust protection

Front Handle
- Tool free adjustable front handle

Bevel Angle Adjustment
- Easy adjustment from 0° - 90°

Universal Cutter Head
- No need for multiple heads/cutters

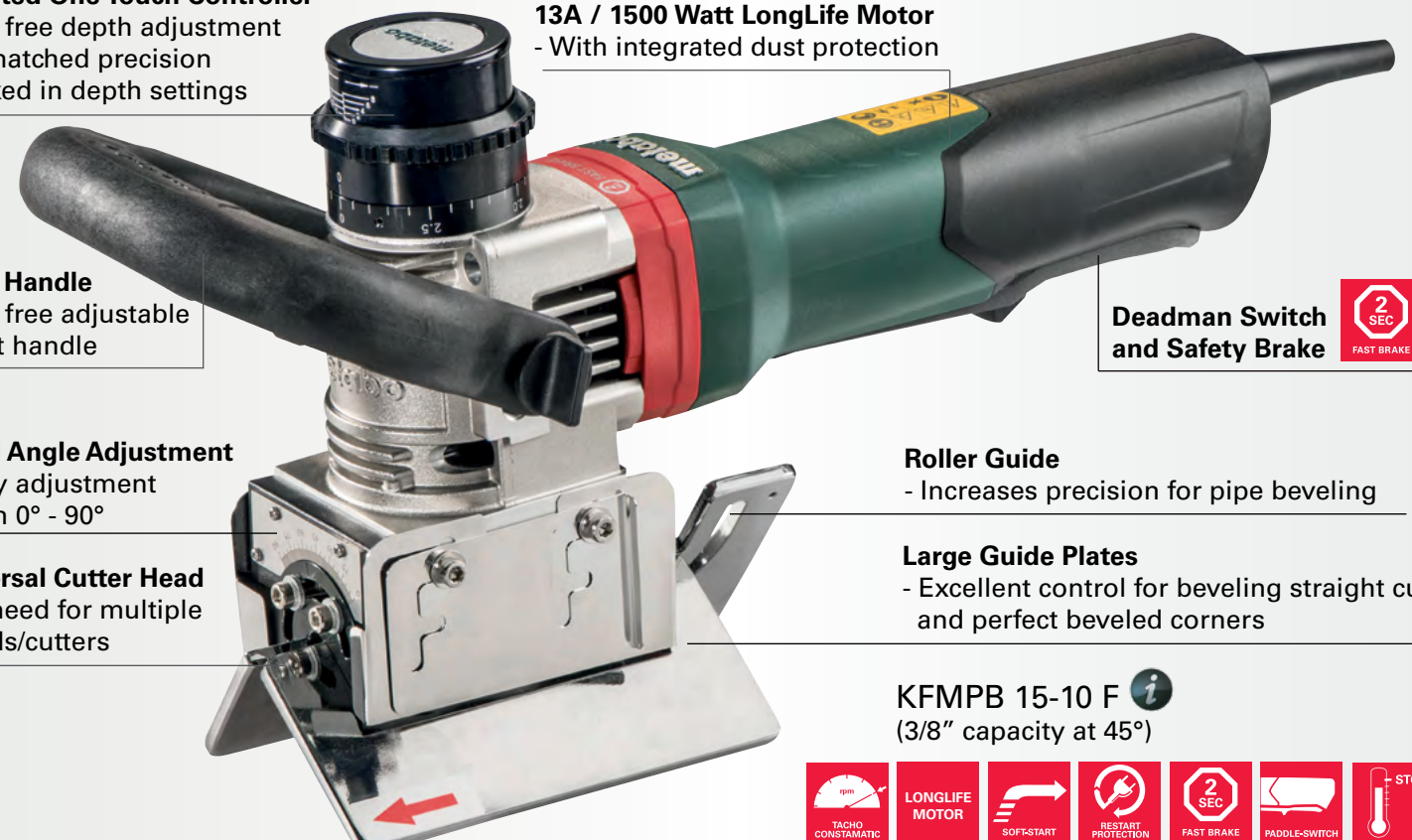
Roller Guide
- Increases precision for pipe beveling

Large Guide Plates
- Excellent control for beveling straight cuts and perfect beveled corners

Deadman Switch and Safety Brake
2 SEC FAST BRAKE

KFMPB 15-10 F
(3/8" capacity at 45°)

Vario Constantatic
Longlife Motor
Softstart
Restart Protection
2 SEC FAST BRAKE
Paddle-Switch
STOP



VS dial

Side locking switch

KFM 15-10 F
(3/8" capacity at 45°)

Vario Constantatic
Longlife Motor
Softstart
Restart Protection
STOP

KFM 16-15 F
(5/8" capacity at 45°)

Rat-tail with lock-on switch

Longlife Motor
Softstart
Restart Protection
STOP



QUICK AND SAFE BEVELING = MORE THAN 70% LABOR SAVINGS!

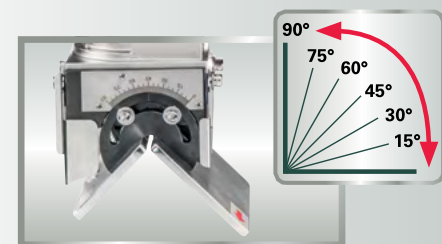

5x more edges processed in the same period of time

VS.
9" Angle Grinder

Infinitely adjustable guide plates quickly adjust, saving time and money

- One cutter head for all bevel angles 0 - 90 °
- No additional cutter heads required to achieve multiple angles
- Infinitely adjustable

90° 75° 60° 45° 30° 15°



PRECISE CHAMFER ANGLES = OPTIMUM WELDING CONDITIONS

More precise than an angle grinder

- Creates clean surfaces without burrs, oxidation or blue discoloration due to heat generation
- The large surface guide plates maintain uniform chamfer angles and depth

With beveling tool

With angle grinder



ACCESSORIES

Indexable Carbide Inserts

- Longer life & fewer replacements are required
- Up to 600 linear feet using all 4 sides
- Pack of 10

P/N: 623564000
(For Steel)

P/N: 623565000
(For Stainless Steel)

P/N: 623559000
(For Aluminum, Plastic and Soft Metals)

Replacement Insert Screws

- Pack of 10

P/N: 623566000

